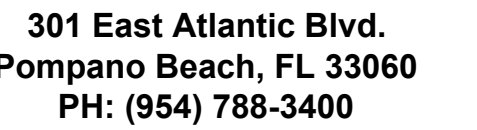
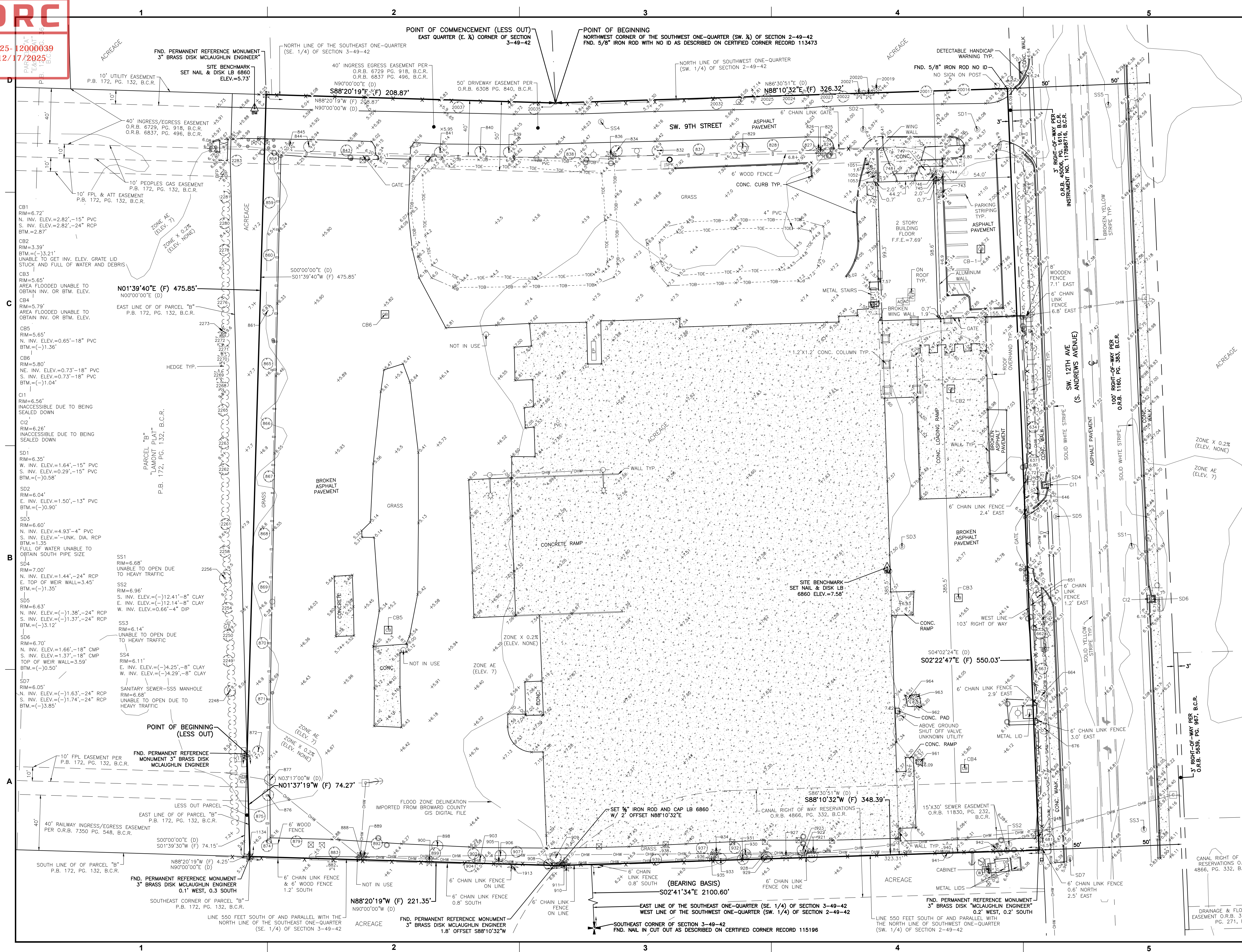


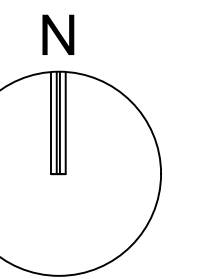
PZ25- 12000039
12/17/2025



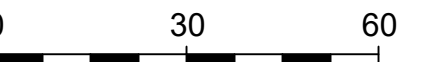
Florida Engineering Business License: CA7928
Florida Surveyor and Mapper Business License: LB6860
Florida Landscape Architecture Business License: LC26000457

[illegible]

DATE:	11/10/25
DRAWN BY:	ZPB
CHECKED BY:	DAS
FIELD BOOK:	1170, 1174, 1201, 1202



GRAPHIC SCALE



SCALE: 1" = 30'

NOTE: PRINTED DRAWING SIZE
MAY HAVE CHANGED FROM
ORIGINAL. VERIFY SCALE USING
BAR SCALE ABOVE.

951 S. ANDREWS
AVENUE, CITY OF
POMPAÑO BEACH,
BROWARD COUNTY,
FLORIDA

SHEET TITLE

BOUNDARY AND TOPOGRAPHIC SURVEY

SHEET NUMBER	2 OF 2
PROJECT NUMBER	15427.00